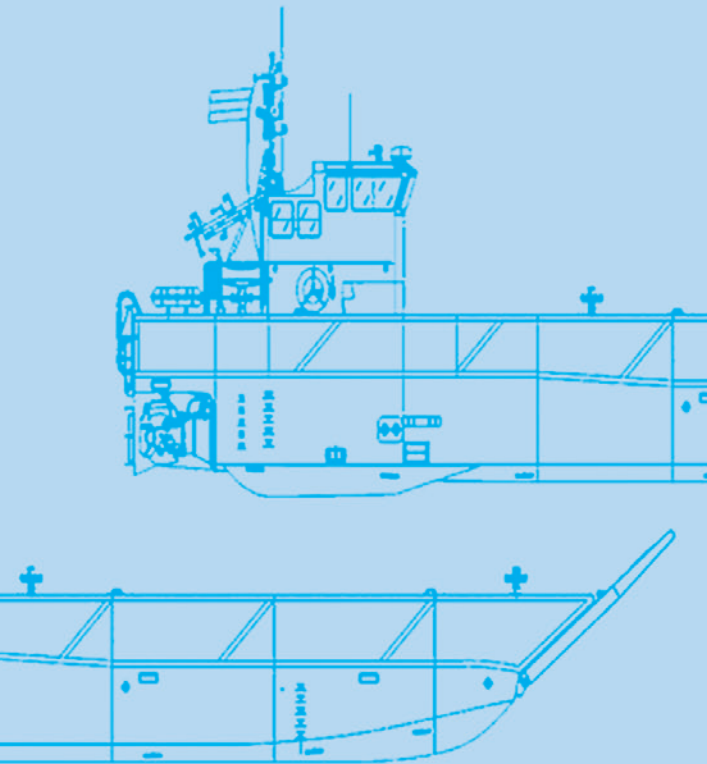


PROJECT SUPPORT FOR CONSTRUCTION OF THE LANDING HELICOPTER DOCK LCM-1E LANDING CRAFT



Profile of the LCM-1E Landing Craft

The Project

The LCM-1E type Landing Craft are embarked in Canberra Class Landing Helicopter Dock (LHD) vessels. The landing craft can operate over-the-horizon, as they are equipped with radar navigation, GPS, gyro needle/magnetic compasses, HF communications equipment, VHF and UHF. This allows them to operate up to 20 nautical miles from the mother ship.

The LCM-1E incorporates a stern gate, facilitating the loading and unloading of rolling stock with a limit of 12 tonne maximum for the transfer of vehicles from one barge to another.

The Landing Craft were constructed by Navantia in their shipyard at Cadiz, Spain.

Project Highlights

2012-13, Teekay was awarded a contract by the Commonwealth to undertake the production monitoring and quality inspections for the construction of 12 Landing Craft. Teekay provided one permanent on-site representative at the shipyard in Cadiz. Onsite responsibilities included:

- Review of the physical progress of the construction of the landing craft.
- Review of production documentation.
- Physical audit of the ships under construction.
- Desktop audit of the Navantia shipyard and BAE production records.
- Complete construction monitoring tasks including inspections of weld and coating, electrical and cable installation, piping installation, mechanical system installation and outfitting.
- Witness the test and set to work activities.